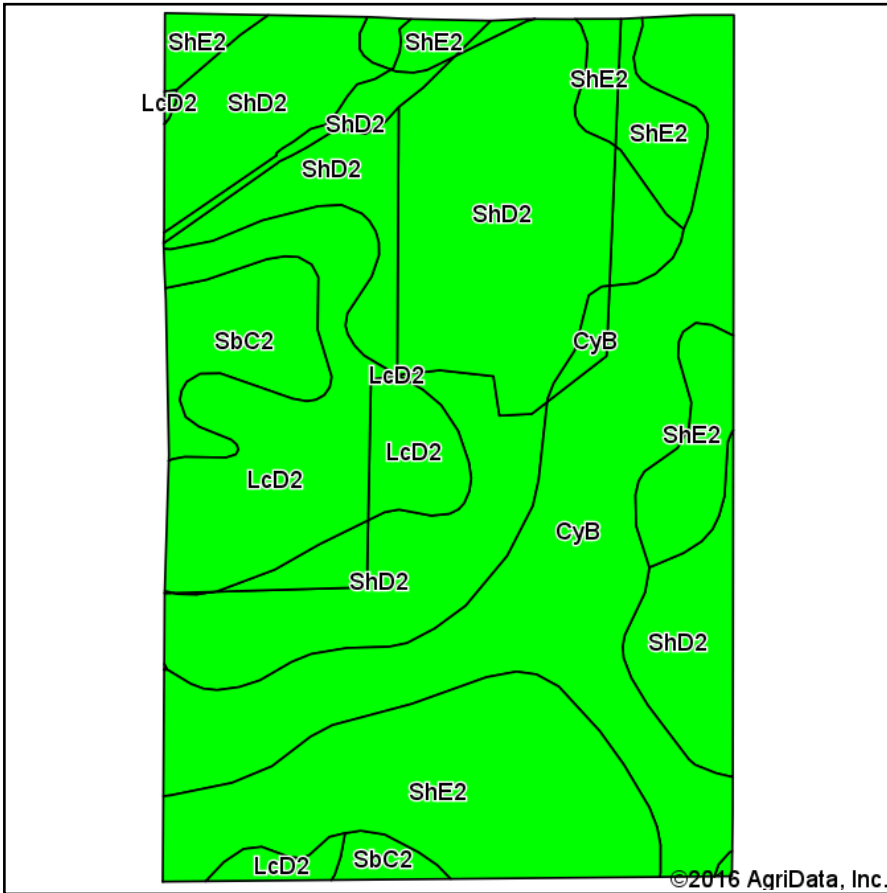
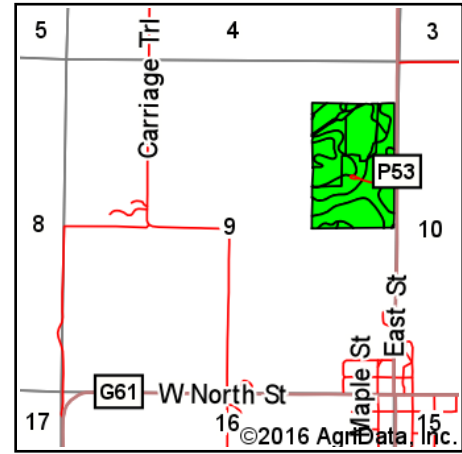


Soils Map



Soils data provided by USDA and NRCS.



State: **Iowa**
 County: **Madison**
 Location: **9-74N-29W**
 Township: **Grand River**
 Acres: **59.25**
 Date: **12/16/2016**



Maps Provided By:



© AgriData, Inc. 2016

www.AgridataInc.com



Area Symbol: IA121, Soil Area Version: 19

Code	Soil Description	Acres	Percent of field	CSR2 Legend	Non-Irr Class *c	*i Corn	*i Alfalfa	*i Soybeans	*i Bluegrass	*i Tall Grasses	CSR2**	CSR
ShD2	Shelby loam, 9 to 14 percent slopes, moderately eroded	22.74	38.4%		Ille	168	4.7	48.7	3	5	52	48
CyB	Colo-Ely silty clay loams, gullied, 2 to 5 percent slopes	13.23	22.3%		Vw	177.6	0	51.5	3.2	5.3	57	10
ShE2	Shelby loam, 14 to 18 percent slopes, moderately eroded	12.63	21.3%		IVe	144	4	41.8	2.6	4.3	40	38
LcD2	Lamoni clay loam, 9 to 14 percent slopes, moderately eroded	7.70	13.0%		IVe	100.8	2.6	29.2	1.8	3	10	15
SbC2	Sharpsburg silty clay loam, 5 to 9 percent slopes, eroded	2.95	5.0%		Ille	204.8	5.7	59.4	3.7	6.1	80	67
Weighted Average						158.1	3.3	45.9	2.8	4.7	46.5	34

Area Symbol: IA121, Soil Area Version: 19

**IA has updated the CSR values for each county to CSR2.

*i Yield data provided by the ISPAID Database version 8.1 developed by IA State University.

*c: Using Capabilities Class Dominant Condition Aggregation Method

Soils data provided by USDA and NRCS.