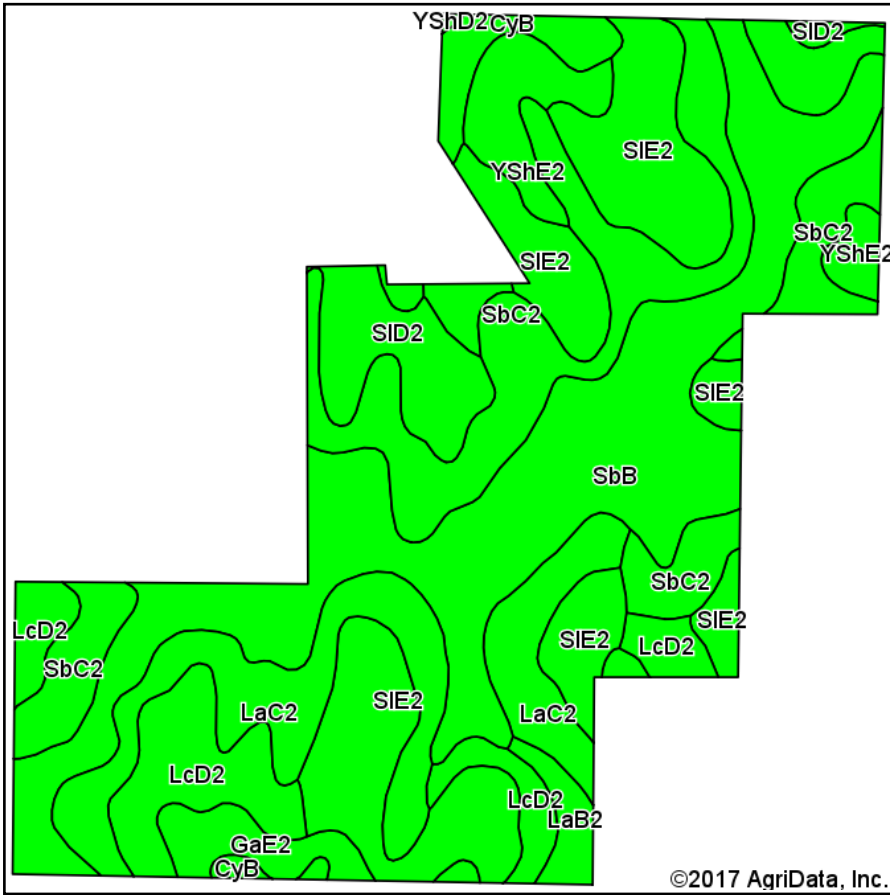
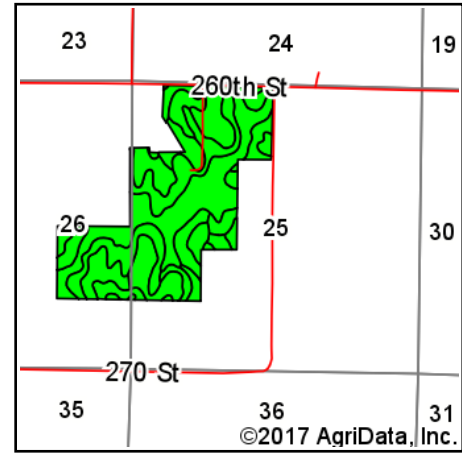


Soils Map



Soils data provided by USDA and NRCS.

©2017 AgriData, Inc.



State: **Iowa**
 County: **Madison**
 Location: **25-75N-29W**
 Township: **Webster**
 Acres: **205.32**
 Date: **8/14/2017**



Area Symbol: IA121, Soil Area Version: 20

Code	Soil Description	Acres	Percent of field	CSR2 Legend	Non-Irr Class *c	*i Corn	*i Alfalfa	*i Soybeans	*i Bluegrass	*i Tall Grasses	CSR2**	CSR	NCCPI Overall
SbB	Sharpsburg silty clay loam, 2 to 5 percent slopes	54.02	26.3%		Ile	225.6	6.3	65.4	4.1	6.8	90	87	93
Sbc2	Sharpsburg silty clay loam, 5 to 9 percent slopes, eroded	39.27	19.1%		IIle	204.8	5.7	59.4	3.7	6.1	80	67	71
SIE2	Shelby-Lamoni complex, 14 to 18 percent slopes, moderately eroded	38.33	18.7%		VIle	88	2.3	25.5	1.6	2.6	27	10	59
LaC2	Ladoga silt loam, 5 to 9 percent slopes, moderately eroded	23.78	11.6%		IIle	192	5.4	55.7	3.5	5.8	78	62	74
LcD2	Lamoni clay loam, 9 to 14 percent slopes, moderately eroded	17.07	8.3%		IVe	100.8	2.6	29.2	1.8	3	10	15	52
SID2	Shelby-Lamoni complex, 9 to 14 percent slopes, moderately erode	9.68	4.7%		IIle	134.4	3.5	39	2.4	4	36	25	63
YShE2	Shelby clay loam, dissected till plain, 14 to 18 percent slopes, eroded	8.21	4.0%		IVe						35		64
CyB	Colo-Ely silty clay loams, gullied, 2 to 5 percent slopes	5.45	2.7%		Vw	177.6	0	51.5	3.2	5.3	57	10	7
GaE2	Gara loam, 14 to 18 percent slopes, moderately eroded	4.89	2.4%		VIle	131.2	3.7	38	2.4	3.9	35	33	57
LaB2	Ladoga silt loam, 2 to 5 percent slopes, moderately eroded	2.57	1.3%		Ile	208	5.8	60.3	3.7	6.2	83	77	74
YShD2	Shelby clay loam, dissected till plain, 9 to 14 percent slopes, eroded	1.60	0.8%		IIle						49		68
GaG	Gara loam, 25 to 40 percent slopes	0.45	0.2%		VIIle	100.8	2.8	29.2	1.8	3	5	5	20
Weighted Average						162.6	4.4	47.1	2.9	4.9	60.8	*-	70.5

**IA has updated the CSR values for each county to CSR2.

*- CSR weighted average cannot be calculated on the current soils data, use prior data version for csr values.

*i Yield data provided by the ISPAID Database version 8.1 developed by IA State University.

*c: Using Capabilities Class Dominant Condition Aggregation Method

Soils data provided by USDA and NRCS.