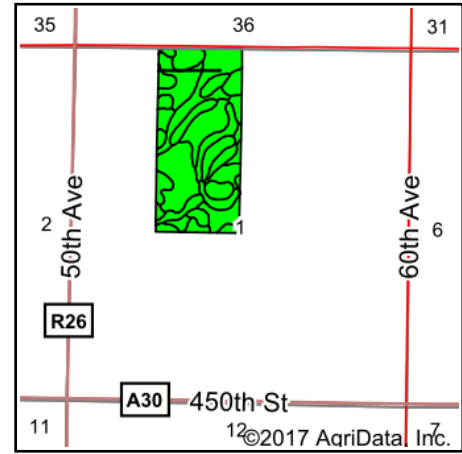
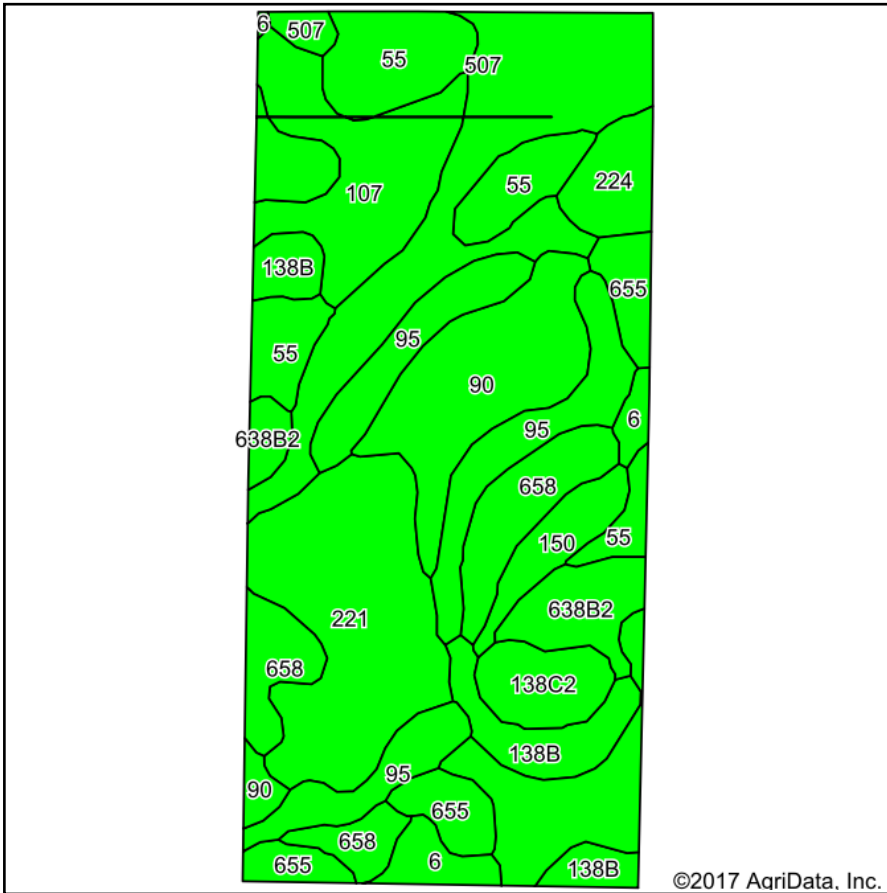


Soils Map



State: **Iowa**
 County: **Winnebago**
 Location: **1-99N-26W**
 Township: **Buffalo**
 Acres: **86.81**
 Date: **9/15/2017**



Soils data provided by USDA and NRCS.

©2017 AgriData, Inc.

© AgriData, Inc. 2017

www.AgriDataInc.com

Area Symbol: IA189, Soil Area Version: 22

Code	Soil Description	Acres	Percent of field	CSR2 Legend	Non-Irr Class *c	*i Corn	*i Alfalfa	*i Soybeans	*i Bluegrass	*i Tall Grasses	CSR2**	CSR	NCCPI Overall
507	Canisteo clay loam, 0 to 2 percent slopes	16.05	18.5%		llw	224	4.7	65	4	6.7	84	78	70
221	Klossner muck, 0 to 1 percent slopes	11.42	13.2%		llw	168	3.5	48.7	3	5	32	49	83
55	Nicollet clay loam, 1 to 3 percent slopes	9.19	10.6%		lw	233.6	6.1	67.7	4.2	7	89	88	82
95	Harps clay loam, 0 to 2 percent slopes	9.08	10.5%		llw	198.4	4.2	57.5	3.6	6	72	62	69
90	Okoboji mucky silt loam, 0 to 1 percent slopes	7.87	9.1%		llw	185.6	3.9	53.8	3.3	5.6	55	59	68
107	Webster clay loam, 0 to 2 percent slopes	6.83	7.9%		llw	224	4.7	65	4	6.7	86	83	78
658	Mayer loam, 0 to 2 percent slopes	6.24	7.2%		llw	166.4	3.5	48.3	3	5	54	62	69
138B	Clarion loam, 2 to 6 percent slopes	4.48	5.2%		lle	225.6	6.3	65.4	4.1	6.8	89	80	81
655	Crippin loam, 1 to 3 percent slopes	3.74	4.3%		le	233.6	6.1	67.7	4.2	7	91	83	71
638B2	Clarion-Swanlake complex, 2 to 6 percent slopes	3.36	3.9%		lle	195.2	5.5	56.6	3.5	5.9	0	71	77
138C2	Clarion loam, 6 to 10 percent slopes, moderately eroded	2.42	2.8%		llle	204.8	5.7	59.4	3.7	6.1	83	63	61
224	Linder loam, 0 to 2 percent slopes	2.19	2.5%		lls	164.8	4.3	47.8	3	4.9	57	50	61
150	Hanska loam, 0 to 2 percent slopes	2.07	2.4%		llw	166.4	3.5	48.3	3	5	54	58	68
6	Okoboji silty clay loam, 0 to 1 percent slopes	1.87	2.2%		llw	168	3.5	48.7	3	5	59	57	80
Weighted Average						202.1	4.6	58.6	3.6	6.1	67.2	69.1	73.8

**IA has updated the CSR values for each county to CSR2.

*i Yield data provided by the ISPAID Database version 8.1 developed by IA State University.

*c: Using Capabilities Class Dominant Condition Aggregation Method

Soils data provided by USDA and NRCS.