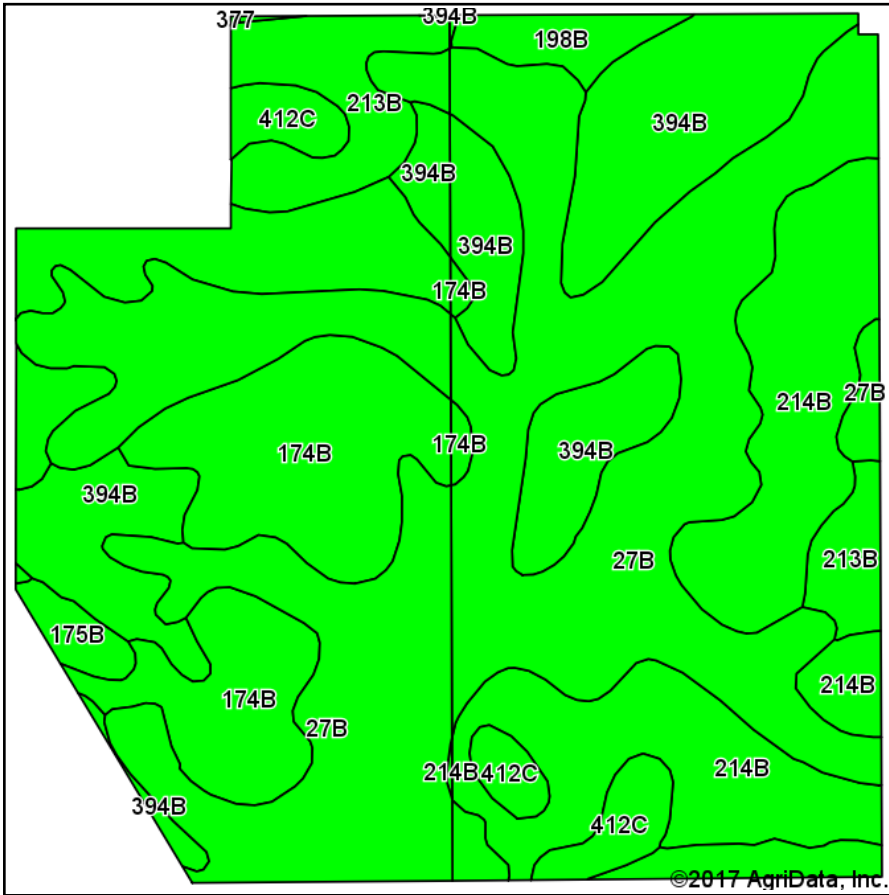
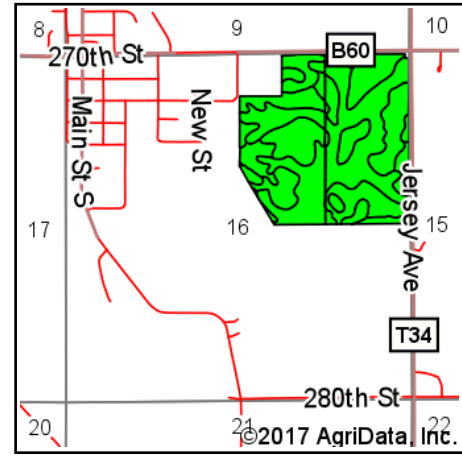


Soils Map



Soils data provided by USDA and NRCS.



State: **Iowa**
 County: **Floyd**
 Location: **16-94N-17W**
 Township: **Union**
 Acres: **138.52**
 Date: **6/7/2017**



Maps Provided By:



© AgriData, Inc. 2017

www.AgriDataInc.com



Area Symbol: IA067, Soil Area Version: 22

Code	Soil Description	Acres	Percent of field	CSR2 Legend	Non-Irr Class *c	*i Corn	*i Alfalfa	*i Soybeans	*i Bluegrass	*i Tall Grasses	CSR2**	CS R	NCCPI Overall
27B	Terril loam, 2 to 5 percent slopes	55.02	39.7%		Ile	224	6.3	65	4	6.7	88	87	90
174B	Bolan loam, 2 to 5 percent slopes	24.59	17.8%		Ils	164.8	4.6	47.8	3	4.9	64	70	86
394B	Ostrander loam, 2 to 5 percent slopes	21.35	15.4%		Ile	225.6	6.3	65.4	4.1	6.8	87	84	94
214B	Rockton loam, 20 to 30 inches to limestone, 2 to 5 percent slopes	21.29	15.4%		Ile	158.4	4.4	45.9	2.9	4.8	47	58	58
213B	Rockton loam, 30 to 40 inches to limestone, 2 to 5 percent slopes	8.90	6.4%		Ile	164.8	4.6	47.8	3	4.9	50	74	62
412C	Emeline loam, 2 to 9 percent slopes	4.15	3.0%		IVs	88	2.5	25.5	1.6	2.6	5	13	24
198B	Floyd loam, 1 to 4 percent slopes	2.01	1.5%		Ilw	222.4	5.8	64.5	4	6.7	89	74	86
175B	Dickinson fine sandy loam, 2 to 5 percent slopes	1.21	0.9%		Ille	161.6	4.5	46.9	2.9	4.8	50	55	55
Weighted Average						195.2	5.5	56.6	3.5	5.8	72	75.5	80.8

**IA has updated the CSR values for each county to CSR2.

*i Yield data provided by the ISPAID Database version 8.1 developed by IA State University.

*c: Using Capabilities Class Dominant Condition Aggregation Method

Soils data provided by USDA and NRCS.