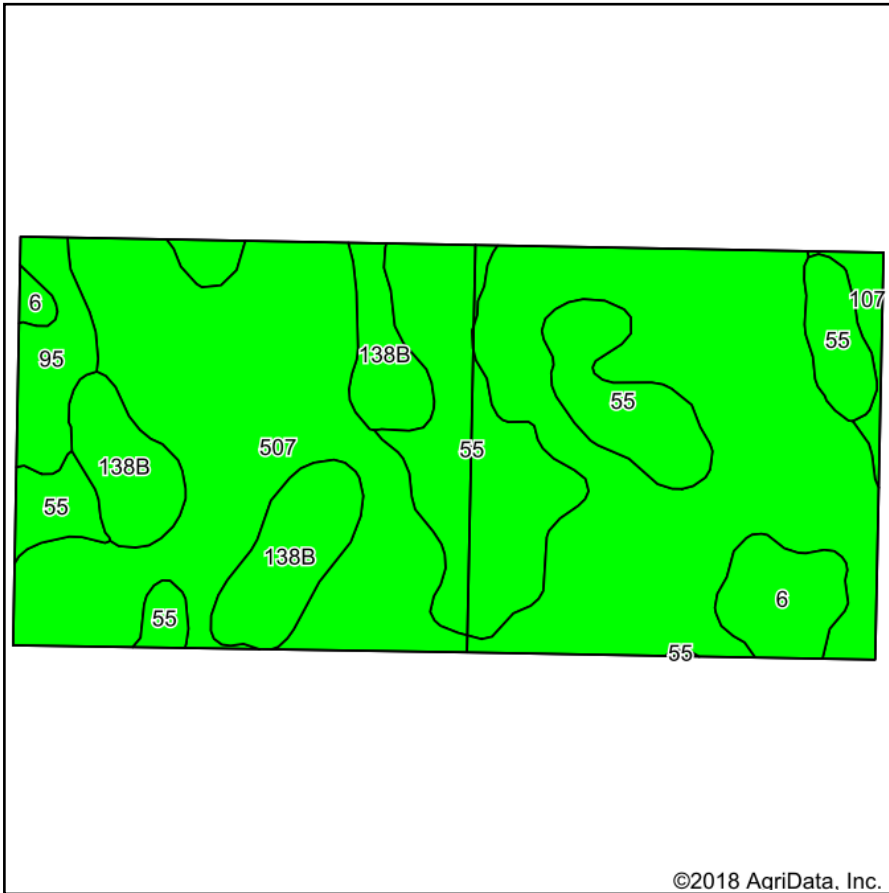
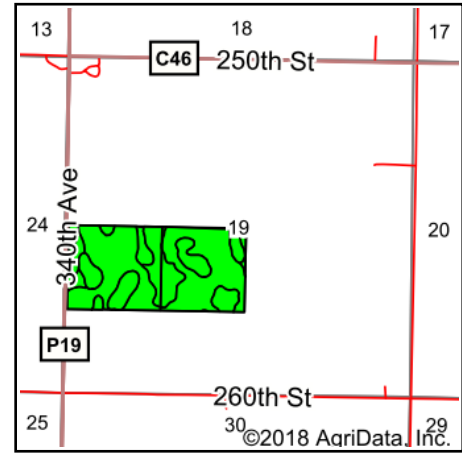


# Soils Map



©2018 AgriData, Inc.

Soils data provided by USDA and NRCS.



State: **Iowa**  
 County: **Humboldt**  
 Location: **19-91N-30W**  
 Township: **Weaver**  
 Acres: **83.68**  
 Date: **10/30/2018**



Maps Provided By:



© Agridata, Inc. 2018

www.AgridataInc.com



## Area Symbol: IA091, Soil Area Version: 24

Code	Soil Description	Acres	Percent of field	CSR2 Legend	Non-Irr Class *c	*i Corn	*i Alfalfa	*i Soybeans	CSR2**	CSR	*n NCCPI Overall	*n NCCPI Corn	*n NCCPI Small Grains	*n NCCPI Soybeans
507	Canisteo clay loam, 0 to 2 percent slopes	49.25	58.9%		llw	224	4.7	65	84	78	79	70	12	79
55	Nicollet clay loam, 1 to 3 percent slopes	18.07	21.6%		lw	233.6	6.1	67.7	89	88	82	82	41	78
138B	Clarion loam, 2 to 6 percent slopes	9.02	10.8%		lle	225.6	6.3	65.4	89	80	83	81	54	83
6	Okoboji silty clay loam, 0 to 1 percent slopes	3.32	4.0%		lllw	185.6	3.9	53.8	59	57	80	80	13	77
95	Harps clay loam, 0 to 2 percent slopes	2.98	3.6%		llw	198.4	4.2	57.5	72	62	77	69	12	77
107	Webster clay loam, 0 to 2 percent slopes	1.04	1.2%		llw	224	4.7	65	86	83	80	78	14	80
<b>Weighted Average</b>						<b>223.8</b>	<b>5.1</b>	<b>64.9</b>	<b>84.2</b>	<b>79</b>	<b>*n 80.1</b>	<b>*n 74.2</b>	<b>*n 22.9</b>	<b>*n 79.1</b>

\*\*IA has updated the CSR values for each county to CSR2.

\*i Yield data provided by the ISPAID Database version 8.1.1 developed by IA State University.

\*n: The aggregation method is "Weighted Average using major components"

\*c: Using Capabilities Class Dominant Condition Aggregation Method

Soils data provided by USDA and NRCS.