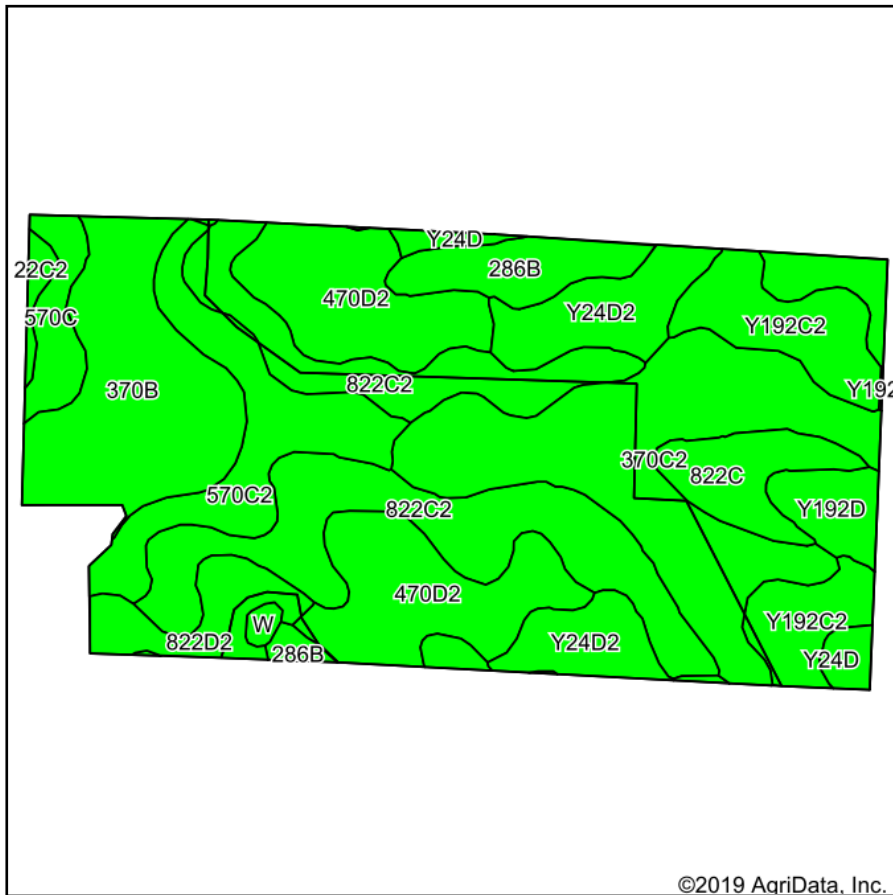
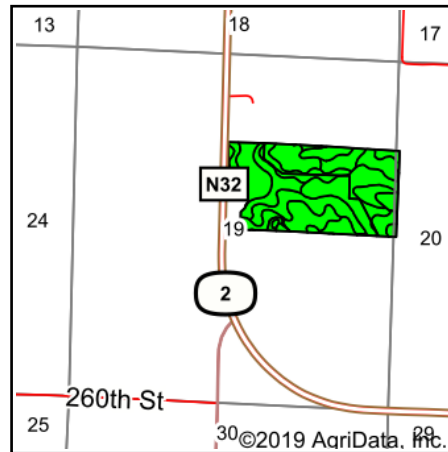


Soils Map



©2019 AgriData, Inc.

Soils data provided by USDA and NRCS.



State: **Iowa**
 County: **Taylor**
 Location: **19-68N-34W**
 Township: **Benton**
 Acres: **75.62**
 Date: **6/20/2019**



Maps Provided By:



© AgriData, Inc. 2019

www.AgriDataInc.com



Area Symbol: IA173. Soil Area Version: 29											
Code	Soil Description	Acres	Percent of field	CSR2 Legend	Non-Irr Class *c	*i Corn	*i Soybeans	CSR2**	CSR	*n NCCPI Overall	
822C2	Lamoni silty clay loam, 5 to 9 percent slopes, moderately eroded	13.50	17.9%		IIIe	129.6	37.6	40	30	56	
370C2	Sharpsburg silty clay loam, 5 to 9 percent slopes, eroded	12.64	16.7%		IIIe	204.8	59.4	80	67	71	
470D2	Lamoni-Shelby complex, 9 to 14 percent slopes, moderately eroded	10.46	13.8%		IVe	134.4	39	24	25	59	
370B	Sharpsburg silty clay loam, 2 to 5 percent slopes	8.41	11.1%		Ile	225.6	65.4	91	87	93	
570C2	Nira silty clay loam, dissected till plain, 5 to 9 percent slopes, eroded	5.70	7.5%		IIIe	187.2	54.3	68	64	80	
Y192C2	Adair clay loam, dissected till plain, 5 to 9 percent slopes, eroded	5.59	7.4%		IIIe	0	0	33		55	
Y24D2	Shelby clay loam, dissected till plain, 9 to 14 percent slopes, eroded	5.17	6.8%		IIIe	0	0	49		68	
286B	Colo-Judson-Nodaway complex, 0 to 5 percent slopes	3.25	4.3%		IIw	216	62.6	80	65	93	
822C	Lamoni silty clay loam, 5 to 9 percent slopes	2.59	3.4%		IIIe	134.4	39	43	35	68	
822D2	Lamoni silty clay loam, 9 to 14 percent slopes, eroded	2.44	3.2%		IVe	100.8	29.2	10	15	53	
Y24D	Shelby loam, dissected till plain, 9 to 14 percent slopes	2.23	2.9%		IIIe	0	0	52		84	
570C	Nira silty clay loam, dissected till plain, 5 to 9 percent slopes	1.75	2.3%		IIIe	192	55.7	71	69	97	
Y192D	Adair clay loam, dissected till plain, 9 to 14 percent slopes	1.64	2.2%		IVe	0	0	14		69	
W	Water	0.25	0.3%			0	0	0	0		
Weighted Average						136.7	39.7	53.6	*-	*n 69.4	

**IA has updated the CSR values for each county to CSR2.

*- CSR weighted average cannot be calculated on the current soils data, use prior data version for csr values.

*i Yield data provided by the ISPAID Database version 8.1.1 developed by IA State University.

*n: The aggregation method is "Weighted Average using major components"

*c: Using Capabilities Class Dominant Condition Aggregation Method

Soils data provided by USDA and NRCS.