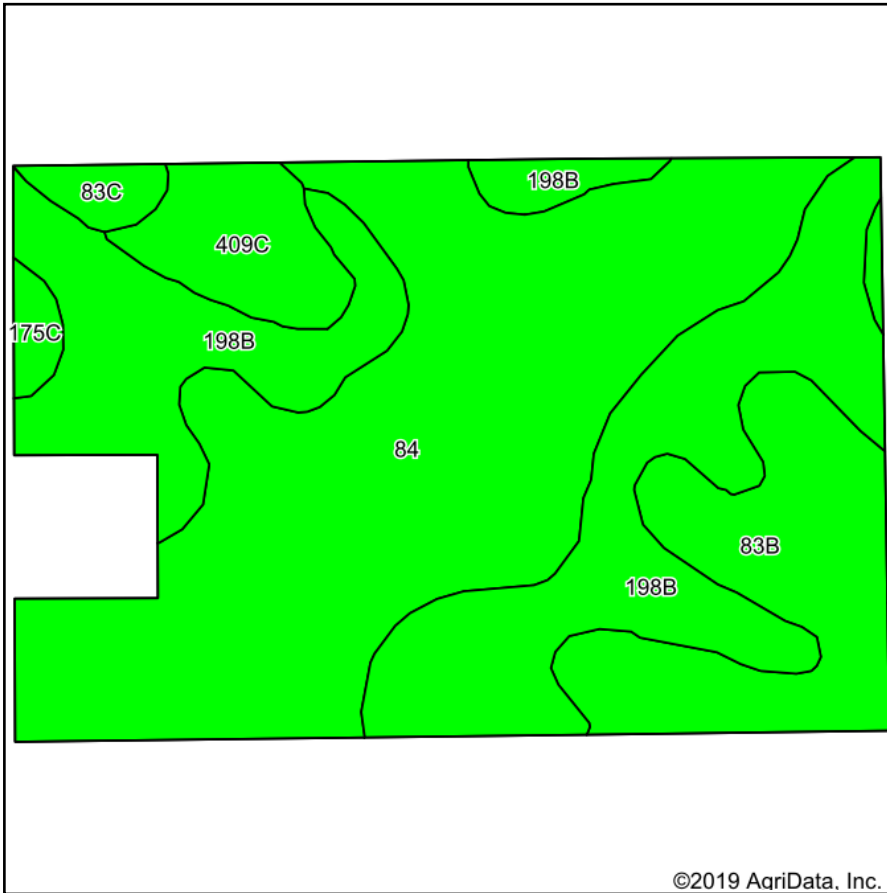
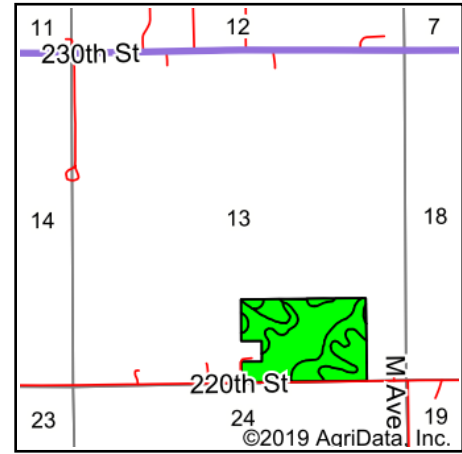


Soils Map



Soils data provided by USDA and NRCS.

©2019 AgriData, Inc.



State: **Iowa**
 County: **Fayette**
 Location: **13-94N-9W**
 Township: **Windsor**
 Acres: **58.58**
 Date: **5/16/2019**



Maps Provided By:



© AgriData, Inc. 2019

www.AgriDataInc.com



Area Symbol: IA065, Soil Area Version: 23

Code	Soil Description	Acres	Percent of field	CSR2 Legend	Non-Irr Class *c	*i Corn	*i Soybeans	CSR2**	CSR	*n NCCPI Overall
84	Clyde clay loam, 0 to 3 percent slopes	26.22	44.8%		IIw	224	65	88	75	86
198B	Floyd loam, 1 to 4 percent slopes	19.07	32.6%		IIw	222.4	64.5	89	80	86
83B	Kenyon loam, 2 to 5 percent slopes	8.65	14.8%		Ile	225.6	65.4	90	85	84
409C	Dickinson fine sandy loam, till substratum, 5 to 9 percent slopes	3.15	5.4%		IIIe	80	23.2	69	41	64
83C	Kenyon loam, 5 to 9 percent slopes	0.86	1.5%		IIIe	209.6	60.8	85	70	83
175C	Dickinson fine sandy loam, 5 to 9 percent slopes	0.63	1.1%		IIIe	80	23.2	45	40	61
Weighted Average						214.2	62.1	87.1	75.8	*n 84.2

**IA has updated the CSR values for each county to CSR2.

*i Yield data provided by the ISPAID Database version 8.1.1 developed by IA State University.

*n: The aggregation method is "Weighted Average using major components"

*c: Using Capabilities Class Dominant Condition Aggregation Method

Soils data provided by USDA and NRCS.