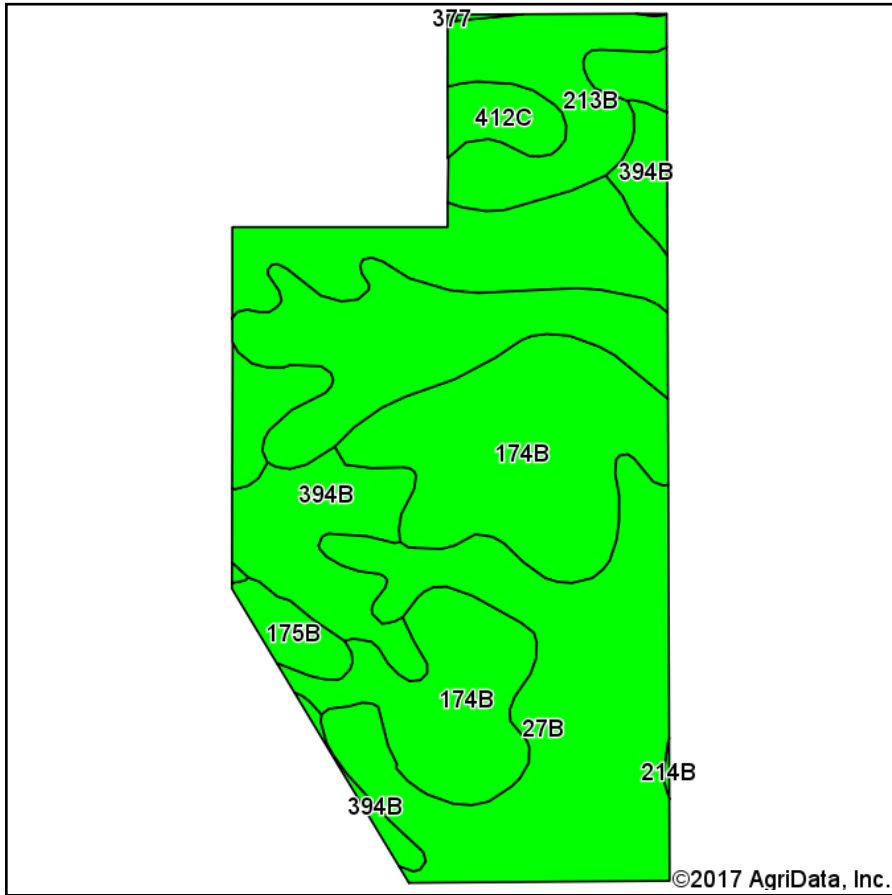
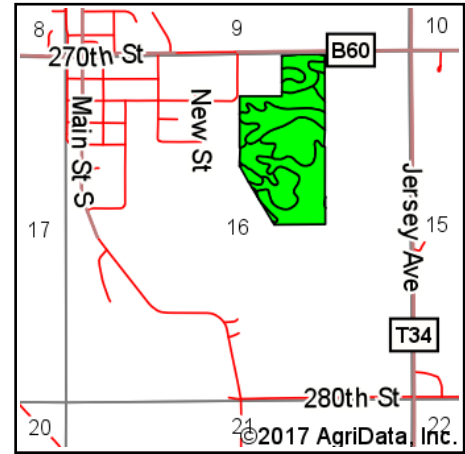


# Soils Map



Soils data provided by USDA and NRCS.



State: **Iowa**  
 County: **Floyd**  
 Location: **16-94N-17W**  
 Township: **Union**  
 Acres: **62.6**  
 Date: **6/7/2017**



Maps Provided By:



© AgriData, Inc. 2017

www.AgriDataInc.com



Area Symbol: IA067, Soil Area Version: 22

Code	Soil Description	Acres	Percent of field	CSR2 Legend	Non-Irr Class *c	*i Corn	*i Alfalfa	*i Soybeans	*i Bluegrass	*i Tall Grasses	CSR2**	CS R	NCCPI Overall
27B	Terril loam, 2 to 5 percent slopes	24.28	38.8%		Ile	224	6.3	65	4	6.7	88	87	90
174B	Bolan loam, 2 to 5 percent slopes	24.13	38.5%		Ils	164.8	4.6	47.8	3	4.9	64	70	86
394B	Ostrander loam, 2 to 5 percent slopes	6.40	10.2%		Ile	225.6	6.3	65.4	4.1	6.8	87	84	94
213B	Rockton loam, 30 to 40 inches to limestone, 2 to 5 percent slopes	5.16	8.2%		Ile	164.8	4.6	47.8	3	4.9	50	74	62
412C	Emeline loam, 2 to 9 percent slopes	1.42	2.3%		IVs	88	2.5	25.5	1.6	2.6	5	13	24
175B	Dickinson fine sandy loam, 2 to 5 percent slopes	1.21	1.9%		IIIe	161.6	4.5	46.9	2.9	4.8	50	55	55
<b>Weighted Average</b>						<b>192.2</b>	<b>5.4</b>	<b>55.7</b>	<b>3.5</b>	<b>5.7</b>	<b>72.9</b>	<b>76.8</b>	<b>84.4</b>

\*\*IA has updated the CSR values for each county to CSR2.

\*i Yield data provided by the ISPAID Database version 8.1 developed by IA State University.

\*c: Using Capabilities Class Dominant Condition Aggregation Method

Soils data provided by USDA and NRCS.