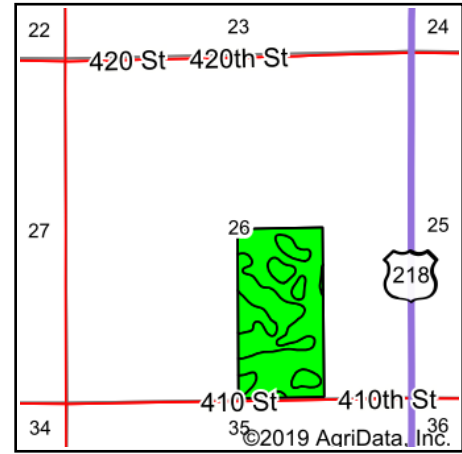
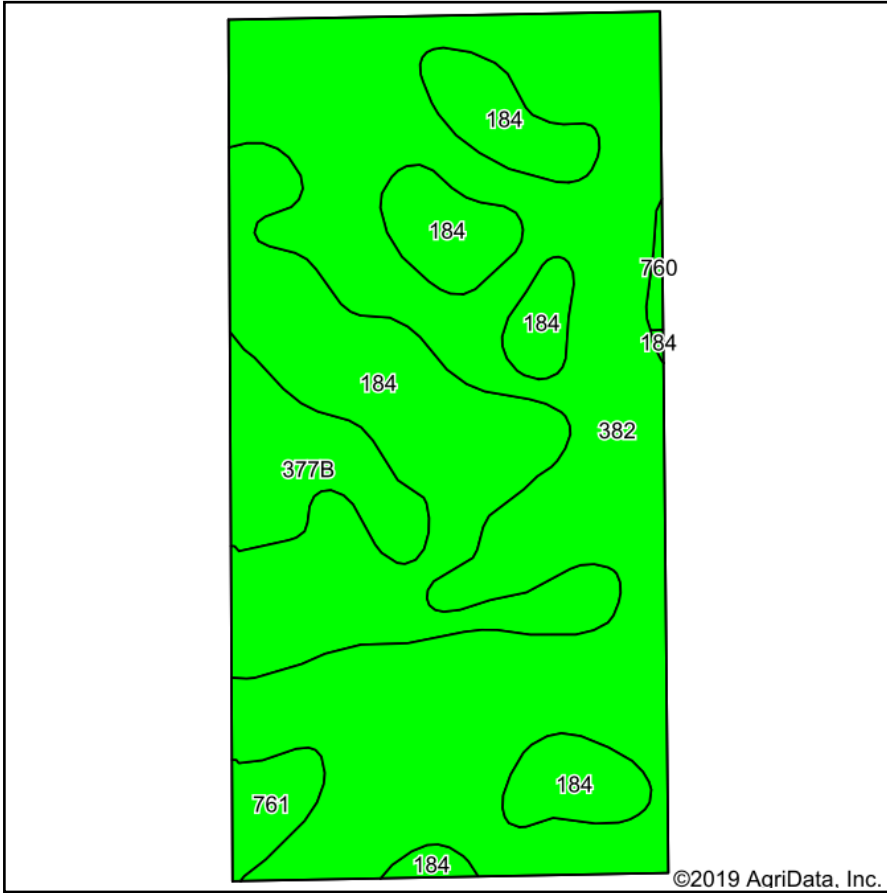


Soils Map



State: **Iowa**
 County: **Mitchell**
 Location: **26-99N-17W**
 Township: **Mitchell**
 Acres: **77.49**
 Date: **5/1/2019**



Area Symbol: IA131, Soil Area Version: 24

Code	Soil Description	Acres	Percent of field	CSR2 Legend	Non-Irr Class *c	*i Corn	*i Soybeans	CSR2**	CSR	*n NCCPI Overall
382	Maxfield silty clay loam, 0 to 2 percent slopes	44.80	57.8%		Ilw	230.4	66.8	94	88	83
184	Klinger silty clay loam, 1 to 4 percent slopes	25.91	33.4%		lw	240	69.6	95	93	88
377B	Dinsdale silty clay loam, 2 to 5 percent slopes	4.79	6.2%		Ile	232	67.3	94	88	89
761	Franklin silt loam, 1 to 3 percent slopes	1.70	2.2%		lw	224	65	85	83	95
760	Ansgar silt loam, 0 to 2 percent slopes	0.29	0.4%		Ilw	216	62.6	85	80	91
Weighted Average						233.5	67.7	94.1	89.5	*n 85.3

**IA has updated the CSR values for each county to CSR2.

*i Yield data provided by the ISPAID Database version 8.1.1 developed by IA State University.

*n: The aggregation method is "Weighted Average using major components"

*c: Using Capabilities Class Dominant Condition Aggregation Method

Soils data provided by USDA and NRCS.