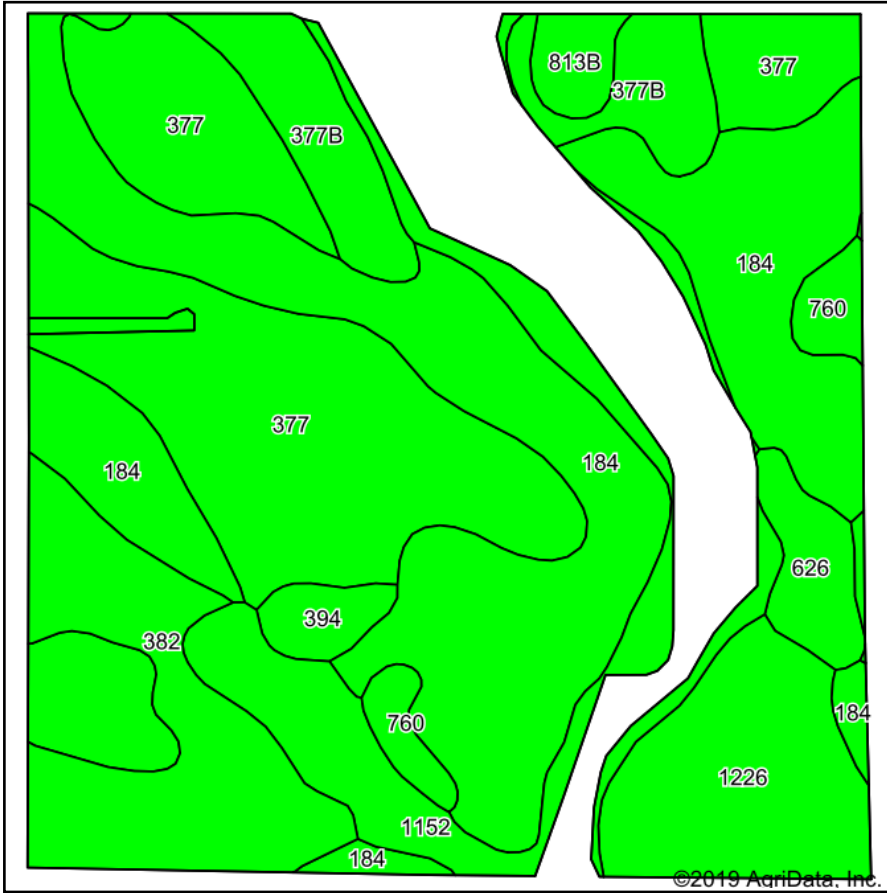
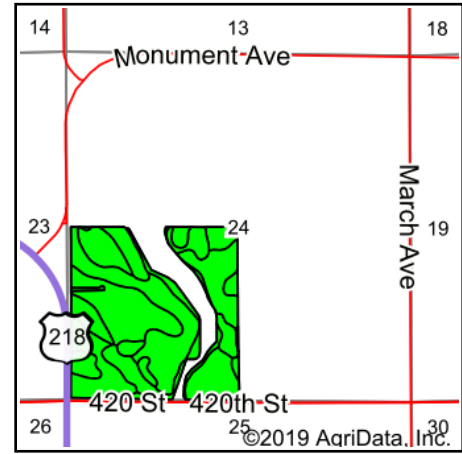


# Soils Map



Soils data provided by USDA and NRCS.



State: **Iowa**  
 County: **Mitchell**  
 Location: **24-99N-17W**  
 Township: **Mitchell**  
 Acres: **135.2**  
 Date: **5/8/2019**



## Area Symbol: IA131, Soil Area Version: 24

Code	Soil Description	Acres	Percent of field	CSR2 Legend	Non-Irr Class *c	*i Corn	*i Soybeans	CSR2**	CSR	*n NCCPI Overall
184	Klinger silty clay loam, 1 to 4 percent slopes	47.68	35.3%		lw	240	69.6	95	93	88
377	Dinsdale silty clay loam, 0 to 2 percent slopes	32.60	24.1%		le	240	69.6	99	93	87
382	Maxfield silty clay loam, 0 to 2 percent slopes	13.24	9.8%		llw	230.4	66.8	94	88	83
1152	Marshan clay loam, 0 to 2 percent slopes, rarely flooded	12.55	9.3%		llw	80	23.2	54	66	84
1226	Lawler loam, 0 to 2 percent slopes, rarely flooded	10.82	8.0%		lls	80	23.2	59	70	86
377B	Dinsdale silty clay loam, 2 to 5 percent slopes	8.80	6.5%		lle	232	67.3	94	88	89
626	Hayfield loam, 0 to 2 percent slopes, rarely flooded	3.12	2.3%		lls	80	23.2	53	65	85
760	Ansgar silt loam, 0 to 2 percent slopes	2.94	2.2%		llw	216	62.6	85	80	91
394	Ostrander loam, 0 to 2 percent slopes	1.73	1.3%		ls	233.6	67.7	94	88	79
813B	Atkinson loam, till plain, 2 to 5 percent slopes	1.72	1.3%		lle	80	23.2	60	80	66
<b>Weighted Average</b>						<b>204.6</b>	<b>59.3</b>	<b>87.5</b>	<b>86.7</b>	<b>*n 86.4</b>

\*\*IA has updated the CSR values for each county to CSR2.

\*i Yield data provided by the ISPAID Database version 8.1.1 developed by IA State University.

\*n: The aggregation method is "Weighted Average using major components"

\*c: Using Capabilities Class Dominant Condition Aggregation Method

Soils data provided by USDA and NRCS.